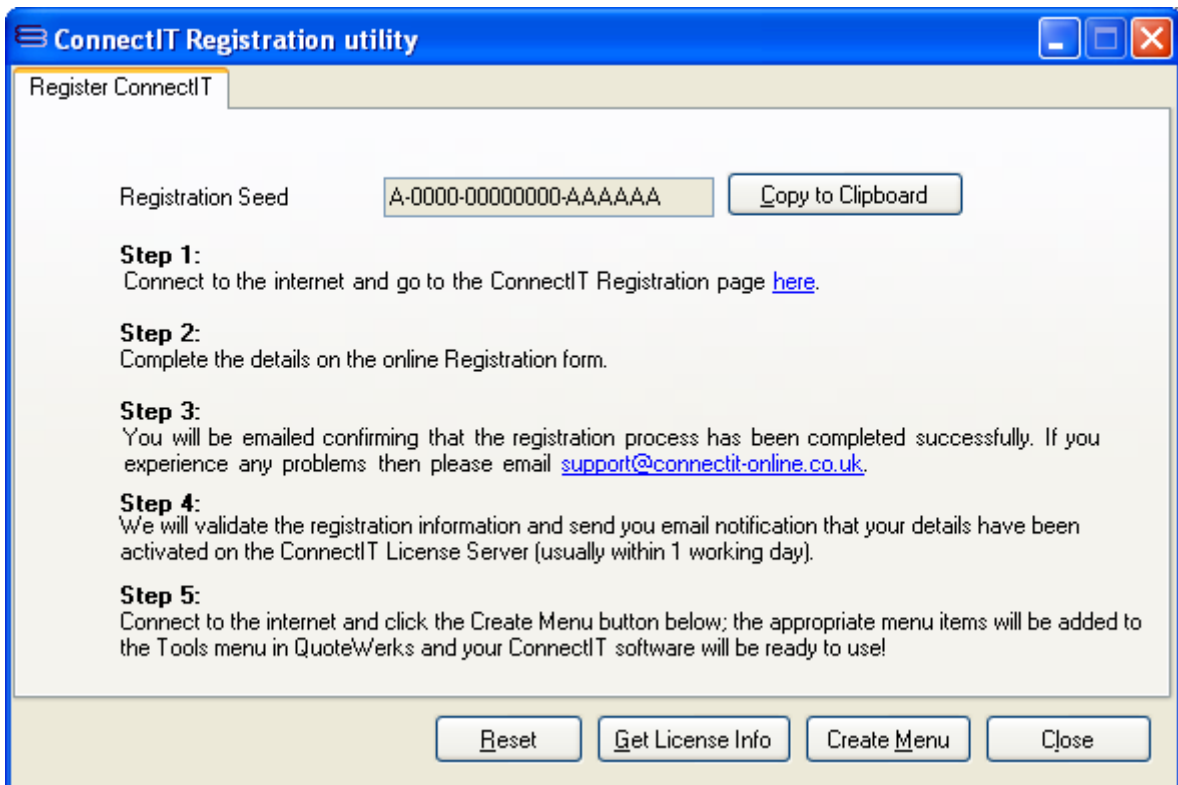


## Step-by-Step Guide to Registration

The **ConnectIt Registration** utility provides instructions on how to register the installation online. Once online registration is complete, clicking the **Create Menu** button will add the appropriate menu items to the **QuoteWerks Tools** menu. To open the **ConnectIt Registration** application, browse to the **Start | All Programs | ConnectIt-MAS90** menu and click the **ConnectIt Registration** option.

Please note that internet access is required on the PC before ConnectIt-MAS90/200 can be registered and QuoteWerks should be running.

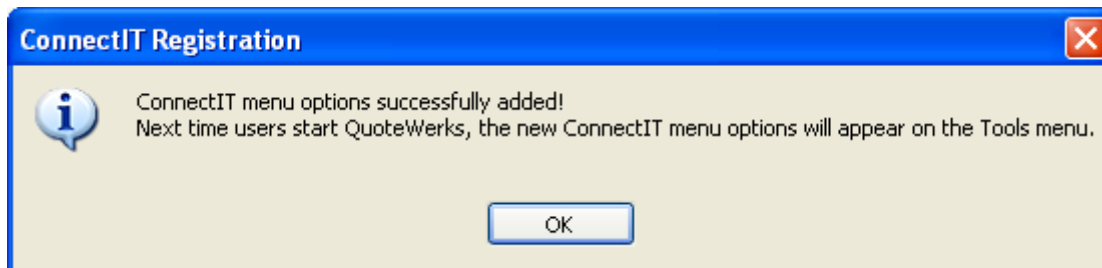
1. Go to the **ConnectIt-MAS90/200** start menu options (by default in **Start\All Programs\ConnectIt-MAS90**) and click the **ConnectIt Registration** option.



The screenshot shows the 'ConnectIT Registration utility' window. The title bar reads 'ConnectIT Registration utility'. The main content area is titled 'Register ConnectIT'. It features a 'Registration Seed' field containing the text 'A-0000-00000000-AAAAAA' and a 'Copy to Clipboard' button. Below this, there are five numbered steps: Step 1: Connect to the internet and go to the ConnectIT Registration page [here](#). Step 2: Complete the details on the online Registration form. Step 3: You will be emailed confirming that the registration process has been completed successfully. If you experience any problems then please email [support@connectit-online.co.uk](mailto:support@connectit-online.co.uk). Step 4: We will validate the registration information and send you email notification that your details have been activated on the ConnectIT License Server (usually within 1 working day). Step 5: Connect to the internet and click the Create Menu button below; the appropriate menu items will be added to the Tools menu in QuoteWerks and your ConnectIT software will be ready to use! At the bottom of the window, there are four buttons: 'Reset', 'Get License Info', 'Create Menu', and 'Close'.

2. If you have not already entered your details into the **ConnectIt** online **License Server**, follow the on screen instructions to register.

3. Once you have received email notification that your details have been enabled on the **ConnectIt License Server**, click the **Create Menu** button to add the **ConnectIt-MAS90** options to the **QuoteWerks Tools** menu.
4. On successful registration, you will receive the message "*ConnectIt menu options successfully added! Next time users start QuoteWerks, the new ConnectIt menu options will appear on the Tools menu. ConnectIt Registration will now close.*"



**Note:** In some exceptional circumstances, you will get a message "*ConnectIt was registered successfully! ConnectIt Registration will now close. Now just add the ConnectIt option to the QuoteWerks menu to use the QuoteWerks to Sage MAS link.*"

Please refer to our online Knowledge Base support area at <http://www.connectit-software.co.uk/support/> and see the "Manually adding the ConnectIt-MAS90 menu option into QuoteWerks" article for instructions on how to do this.

5. To refresh the **ConnectIt License Database** information with the settings from the online **ConnectIt License Server** (for example when having purchased additional licenses or upgrading to a newer version of the **ConnectIt** software) click the **Get License Info** button.
6. To clear the **ConnectIt License Database** of all registration information (including users), click the **Reset** button.



Development Partner

SILVER